



HILO FIRMWARE REVISION 6 - MARCH 2014

Thunderbolt support and extensive remote control capabilities are the most obvious additions to Hilo in Firmware 6. Hilo TB can be used with any Thunderbolt equipped Mac or Windows PC for fast, stable and powerful connectivity. Up to 6 devices (including multiple Hilo and Aurora converters) can operate off a single port with very low latency and high stability. Remote control operation is also now available for Mac, PCs and soon iPad. iPad can be used in both wired and wireless modes.

Other features: Pro Tools HD connectivity has been implemented, using the optional LT-HD LSlot card; additional front panel volume controls are available; a new simple-to-use "Standard Menu" set; and several "Under the Hood" improvements.

New Hilo Remote for Mac and PC computers.

Remote Control via Mac or Windows computers, iPad. Maybe the #1 request from Hilo end users.

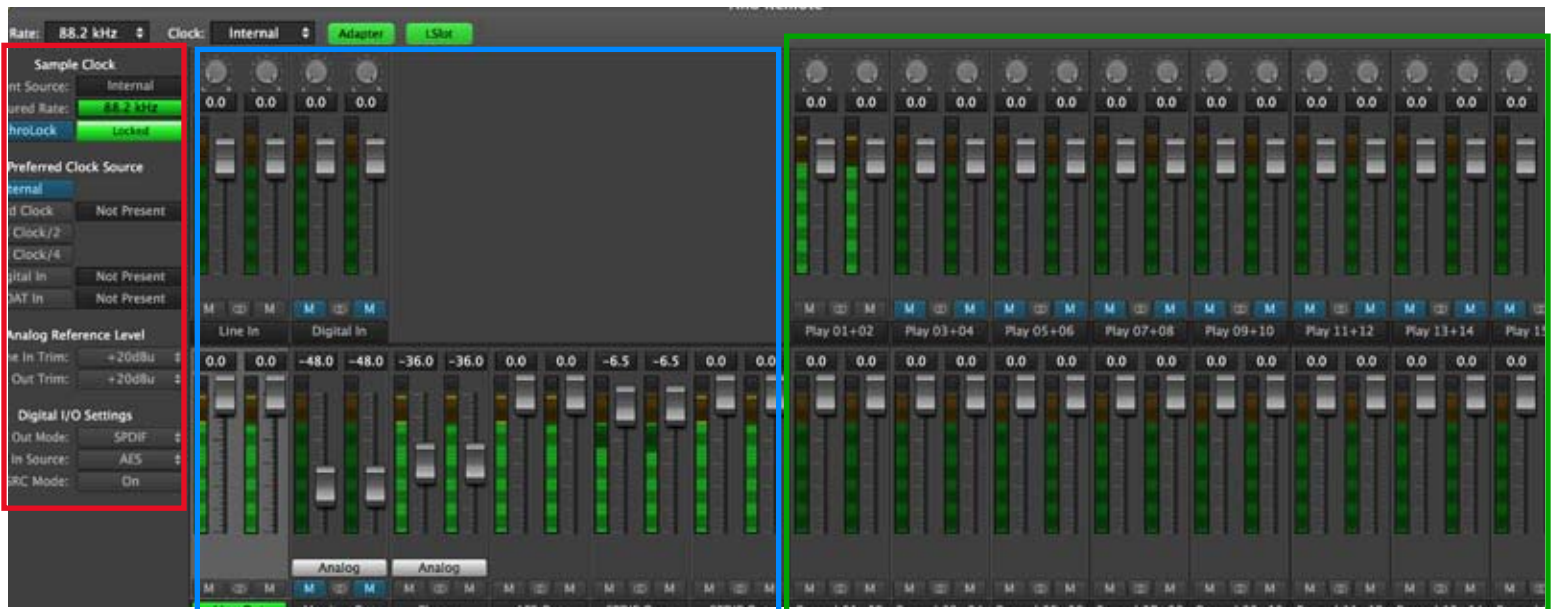
You will now have the ability to fully access all of the volume controls and level meters of the Hilo from a computer. This includes a greatly expanded version of Hilo's "All Meters Page" with added functionality. Hilo Remote is a very useful tool for monitoring and setting the routing in Hilo. The Hilo Remote Control application is initially available for download on Windows and OS X, with an iPad version available on the Apple Store as soon as it is approved by Apple.

Adapter Section

Shows clock status and source. Also allows control and status on analog trim levels and digital I/O options. Adapter section can be hidden or visible.

LSlot Section

Shows and controls the level, panning, mute for all Record and Play channels available via USB and Thunderbolt. Like the Adapter section, can be hidden or visible.



Main Mixer Section

For the back panel hardware I/O. Allows meters, level settings, mute, panning for all. When an Output channel is selected, a unique mix of inputs and Play streams can be routed to that output. Control over monitor levels, output levels and panning are provided.

Simplified Menu set added

We call this the "Standard" Menu. Selectable from the Display Page, the Standard menu provides a simpler interface for the most used functions using the Default settings. The remaining available controls are Backlight control; Line In & Line Out Trim; About Hilo; Meter selection and the new Source Select option described below. To return to the previous full menus, simply press the 'Advanced Menus' button.



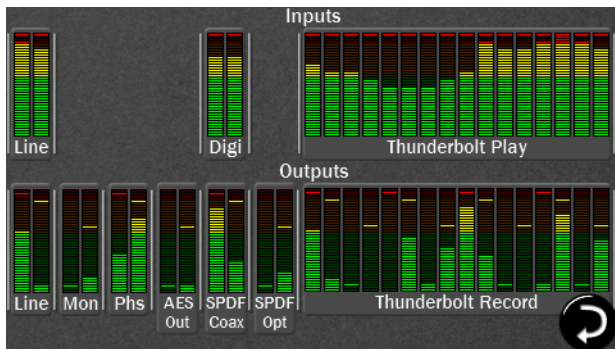
New Source Select option in Standard Menu

This new option allows for simple routing of the audio coming from the host computer (USB Play; Thunderbolt Play...) to all physical outputs. In addition, a single source may also be mixed with the host computer audio from the Line In or any one of the digital inputs. This duplicates the basic features of the Output Mix Routing Page and Digital In Source Selection. Please note that the ADAT I/O is disabled in this mode.



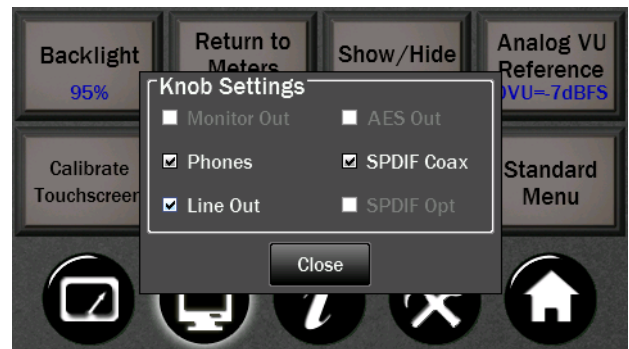
Support for the LT-TB Thunderbolt LSlot card

Provides full functionality and labeling for the LT-TB Thunderbolt Interface. This changed channel names from USB Play and USB Record to Thunderbolt Play (TBT Play) and Thunderbolt Record (TBT Record). Up to six HiloTB converters (or mix of Hilo and Aurora TB converters) can be connected on a single Thunderbolt port, Windows and OSX certified.



New Knob Settings for additional Volume control

Located on the Display Page, this new 'Knob Settings' function allows the user to adjust the volume of any of the stereo outputs using the rotary encoder. A maximum of three outputs may be selected at one time. Pressing the rotary encoder will toggle between the selected outputs. Available for: Monitor Out; Headphones; Line Out; AES Out; SPDIF Coax Out; SPDIF Optical.



Support for LT-HD ProTools HD Interface

We have had a lot of requests for use of Hilo in a Pro Tools HD systems. This is now implemented. Channel names will show up as PTHD Play and PTHD Record. Please note that Hilo firmware update is not possible using a LT-HD card since it has no MIDI interface. The LT-TB or LT-USB may be temporarily installed to update the Hilo firmware, if required.

Support for no LSlot Interface

The version removes all references to LSlot channels if no LSlot device is detected. Please note that it would not be possible to update the Hilo firmware without an LSlot device.

Other Features, Functions and Fixes

- **New Show/Hide Settings.** Three separate button functions are combined into a new single control. This button allows adding or hiding Sample Rate and Sync Source information; Recall Scene button to Horizontal and VU meters pages.
- **Output Mix Routing Page:** Source Channel Select function 'Sum' changed from -3.0dB to -6.0dB attenuation.
- **Dither** enabled when digital volumes are active.
- **Mute ADAT In or USB Play** sources if the inputs for those devices are not locked.
- **Added Support** for LT-FW FireWire Interface.
- **Removed LT-USB Mode** (8 or 16 channel operation) from Tools Menu if LT-USB is not installed.

LYNX STUDIO TECHNOLOGY, INC.

Phone: 714-545-4700 • www.lynxstudio.com • sales@lynxstudio.com